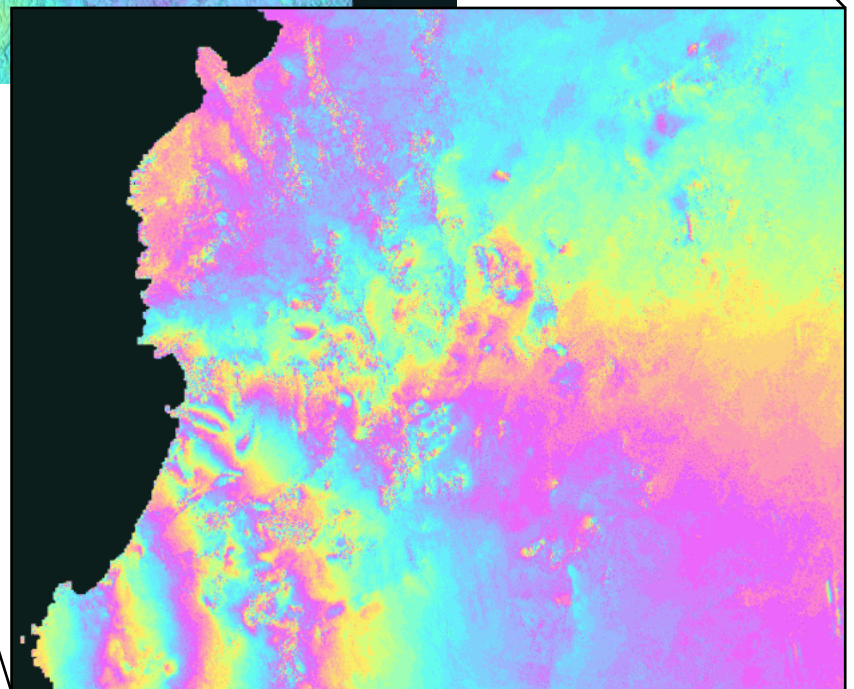
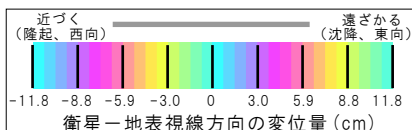
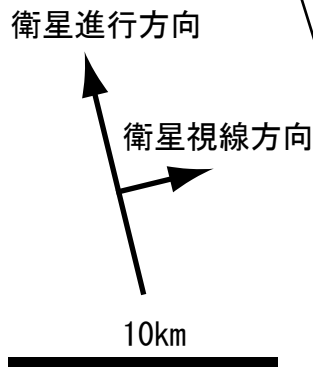
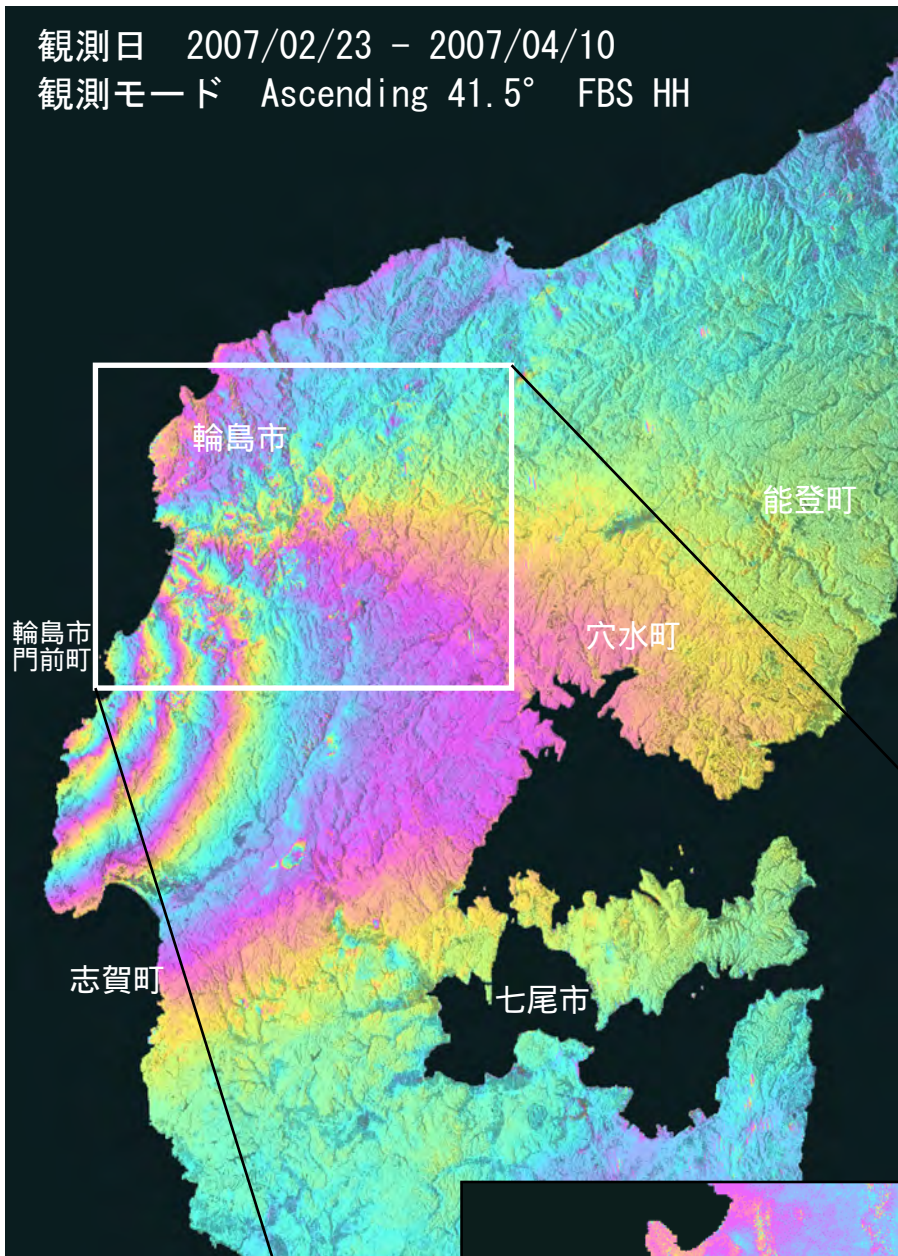


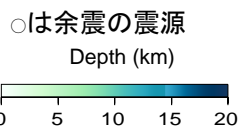
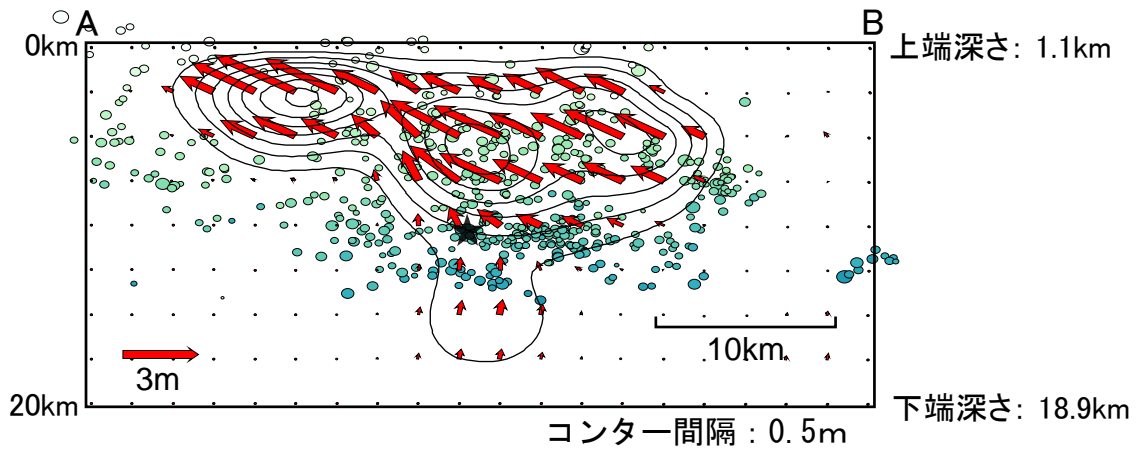
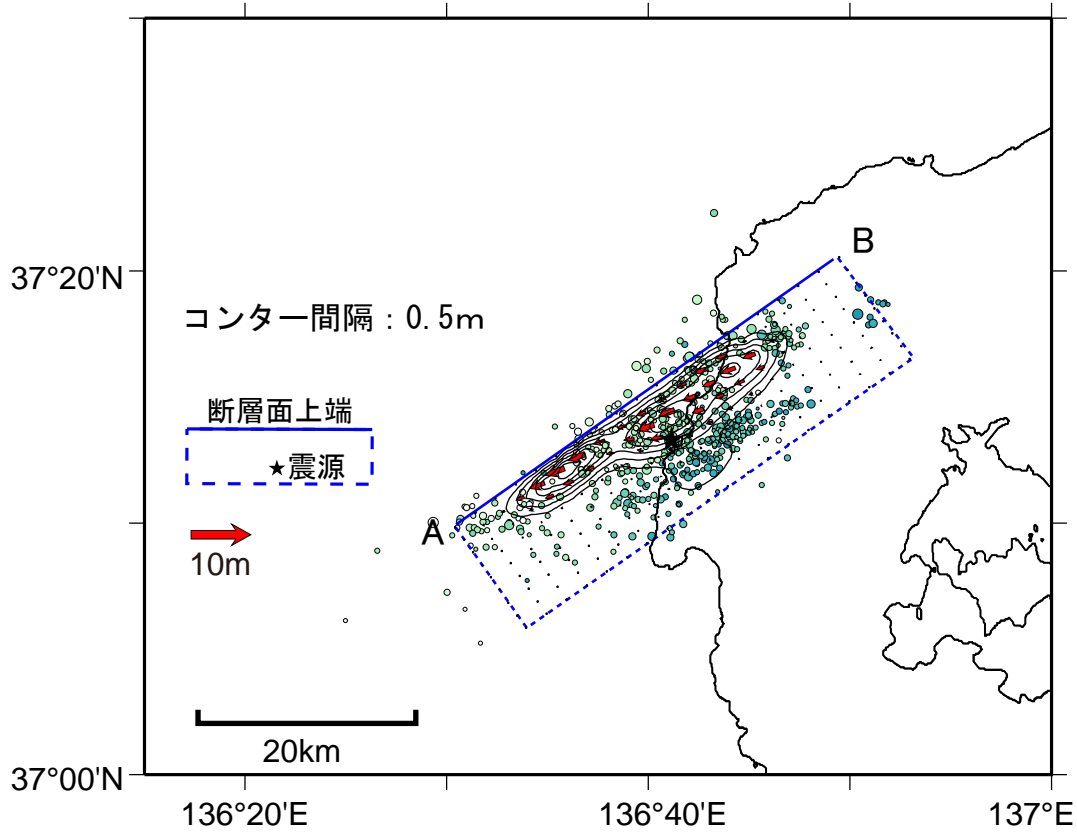
「だいち」 PALSAR データの干渉解析で得られた 能登半島地震の地殻変動

観測日 2007/02/23 - 2007/04/10
観測モード Ascending 41.5° FBS HH



Analysis by GSI from ALOS raw data (c)METI, JAXA

震源断層面上の推定滑り分布(暫定)



走向 strike 55.0°
 傾き dip 63.0°