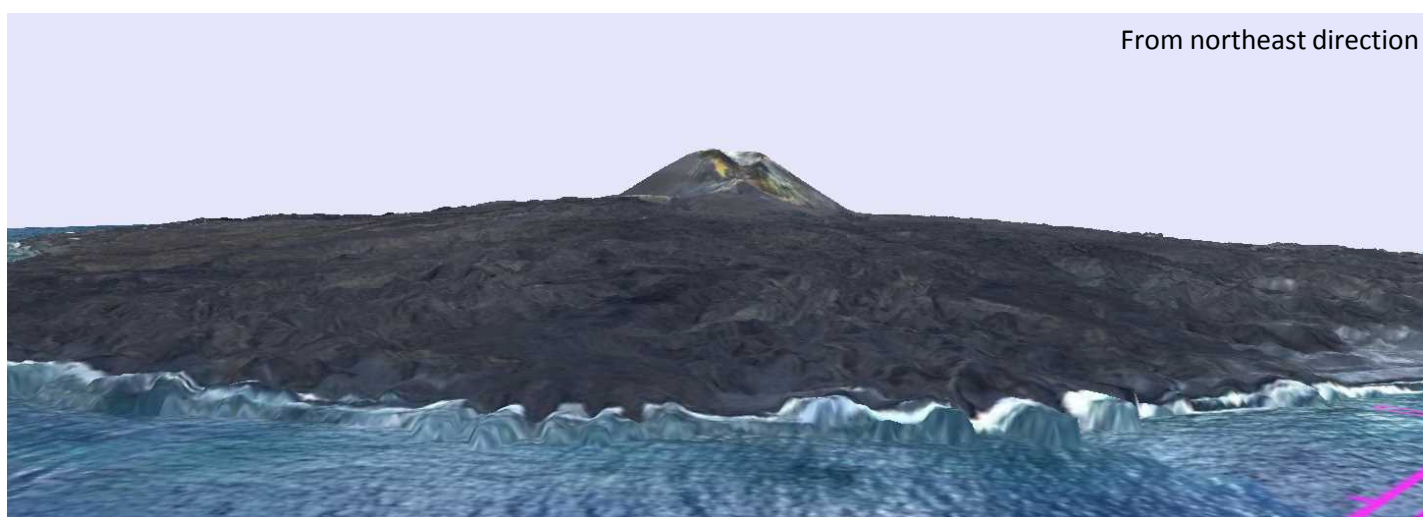
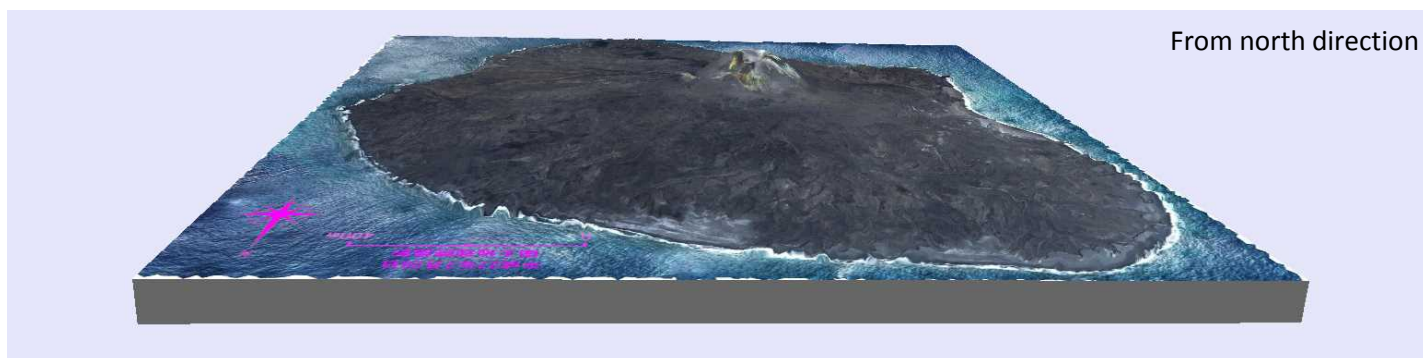
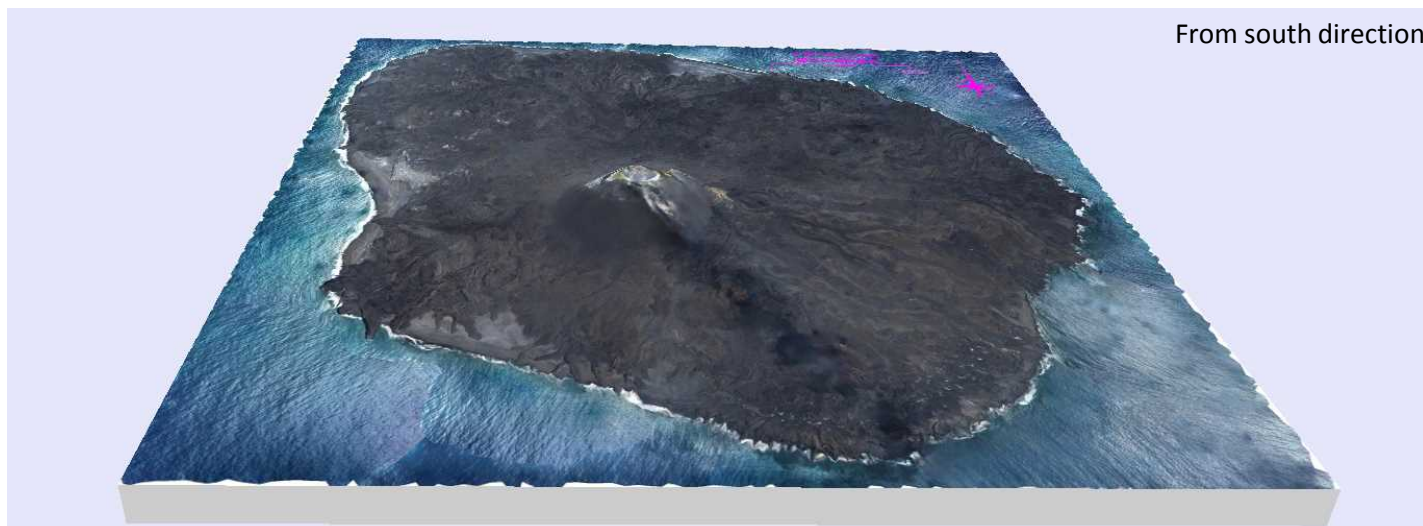


## 3D images of the area around Nishinoshima Island



3D images of area around Nishinoshima Island of July 28<sup>th</sup>, 2015 (Enhancement of height : 100% of the real value)

Information regarding eruption activity around Nishinoshima Island is published under "GSI Maps".  
<http://www.gsi.go.jp/gyoumu/gyoumu41000.html>