

Revision of Survey Results of Control Points after the 2011 off the Pacific Coast of Tohoku Earthquake

**Yohei HIYAMA, Atsushi YAMAGIWA, Toshio KAWAHARA, Masao IWATA,
Yoshihiro FUKUZAKI, Yasushi SHOUJI, Yudai SATO, Toru YUTSUDO, Toshiyuki SASAKI,
Hiromi SHIGEMATSU, Hiromi YAMAO, Takaaki INUKAI, Mitsuo OHTAKI,
Kensuke KOKADO, Shinobu KURIHARA, Isao KIMURA, Takashi TSUTSUMI,
Toshihiro YAHAGI, Yukiko FURUYA, Isao KAGEYAMA, Satoshi KAWAMOTO,
Kazunori YAMAGUCHI, Hiromichi TSUJI and Shoichi MATSUMURA**

Abstract

Large-scale crustal deformation over a wide area of eastern Japan was detected by GEONET, Japan's dense Global Positioning System (GPS) network, following the 2011 off the Pacific coast of Tohoku Earthquake occurred on March 11, 2011. Since it was assumed that coordinates of the control points for public surveys, such as GEONET stations, triangulation stations and leveling bench marks, in a wide area were greatly changed and could hardly maintain consistency between nearby stations, the Geospatial Information Authority of Japan (GSI) stopped providing 'Survey Results' of them, which were the coordinates for survey use, and announced it publicly on March 14, 2011.

In order to promote various public restoration programs in the affected area, it was strongly required to revise the Survey Results in an urgent manner. On the other hand, because large postseismic deformation had continued widely after the event, it was concerned that even if the Survey Results were updated immediately, they would become ineffective in a short time. Therefore GSI examined the optimal timing to calculate their new coordinates by predicting the amount of future postseismic movement based on the observation data of GEONET stations. Eventually, the new Survey Results of GEONET stations were published on May 31, 2011 and those of triangulation stations and leveling bench marks on October 31, 2011 respectively.

In this paper we report the revision process of the Survey Results after the 2011 Tohoku Earthquake.

1. Stoppage of Provision of Survey Results of Control Points

The 2011 off the Pacific coast of Tohoku Earthquake (hereafter 'Tohoku Earthquake') was such a major seismic event (Mw=9.0) that occurred at 05:46:23UT and triggered a huge tsunami, causing severe and catastrophic damages along the coast of Tohoku or Kanto district. On this event, large-scale crustal deformation was detected by Japan's wide and dense GPS observation network (GEONET), which had been operated by Geospatial Information Authority of Japan (GSI) since 1996. The station "Oshika", which is located close to the epicenter, was moved about 5.3m to the east-southeast direction and subsided about 1.2m for instance (Fig. 1). After the main shock, postseismic deformation has been continued widely along the Pacific coast area of eastern Japan and local scale crustal deformations have been observed due to some aftershocks (Suito et al. [2011a, 2011b]). Under those circumstances, it was assumed that the Survey Results of control points, which were coordinates for survey use, were significantly

different from their original positions and should no longer be available for the use for public surveys.

On carrying out the public surveys, precision of the relative position between nearby control points is crucial in terms of maintaining consistency. After some previous earthquakes, such as 2003 Tokachi earthquake and 2008 Iwate-Miyagi earthquake, GSI has examined the area where provision of the Survey Results was stopped by calculating the amount of crustal strain values by earthquake fault models, which were estimated based on the data from the GEONET stations and determined it with the criteria approximately 2ppm (equivalent to 2cm per 10km). According to this policy, we stopped publication of the Survey Results of the GEONET stations and the triangulation stations of 16 prefectures on March 14, 2011, immediately after the Tohoku Earthquake (Fig.2). In addition, the Survey Results of the leveling bench marks were also suspended on the same day along with leveling routes where estimated vertical deformation was more than a few centimeters (Fig.3).

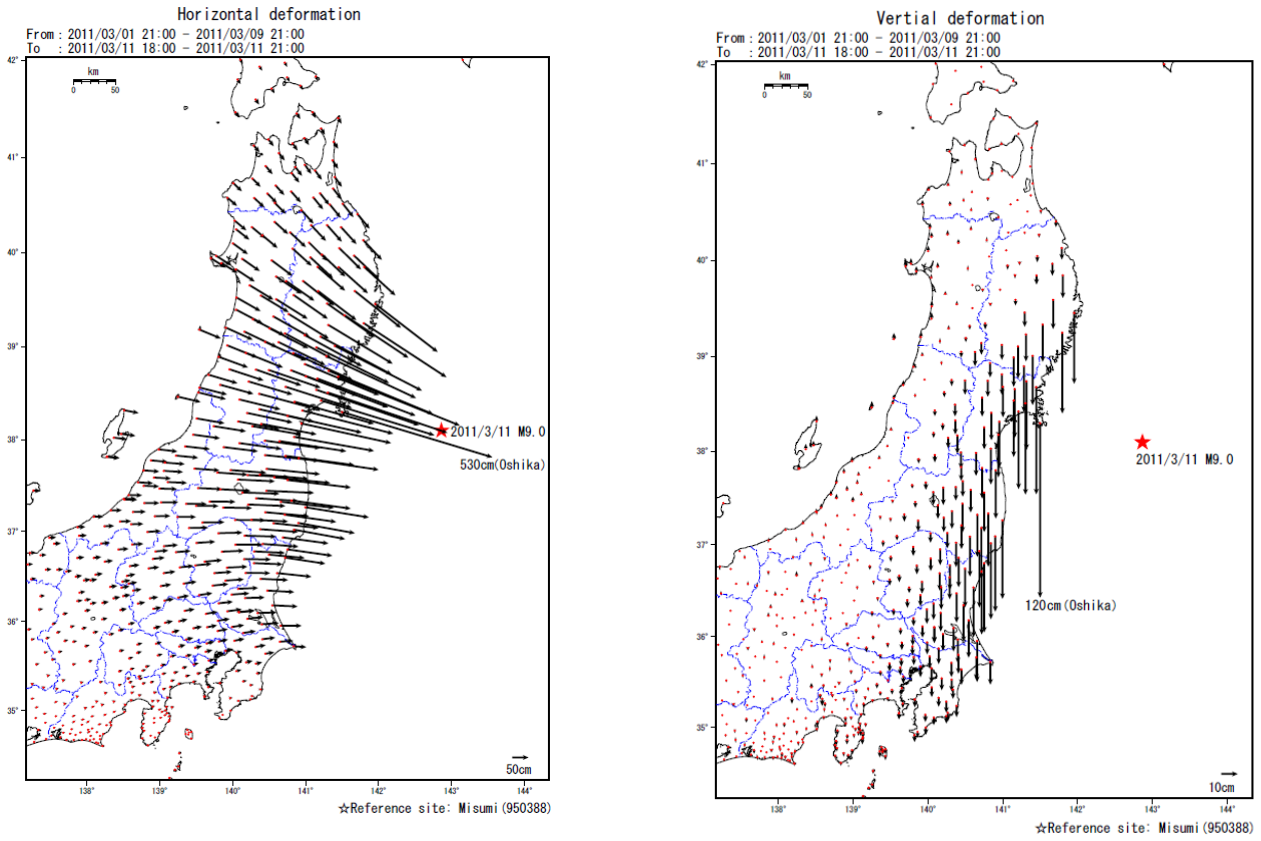


Fig. 1 Crustal movements caused by the 2011 off the Pacific coast of Tohoku Earthquake (Left: horizontal deformation, Right: Vertical deformation)



Fig.2 Areas for which publication of Survey Results of GEONET stations and triangulation stations was withdrawn on March 14 (red frame); for which updated Survey Results of GEONET stations were released on May 31 (red/yellow frame); for which publication of Survey Results of additional triangulation stations was withdrawn on May 31 (yellow frame); and for which adjustment calculations were applied to Survey Results of GEONET stations (green frame).

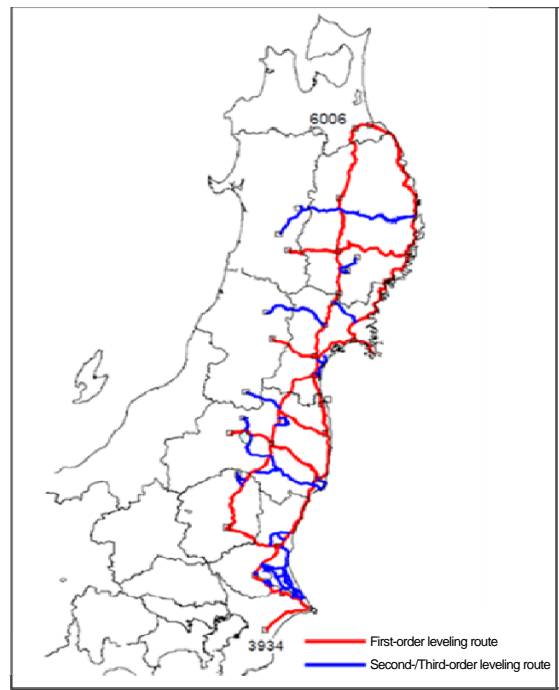


Fig.3 Bench mark routes for which publication of Survey Results was withdrawn

In the course of evaluating the recalculated Survey Results of GEONET stations, it came to light that in addition to 16 prefectures, the Survey Results of Toyama, Ishikawa, Fukui and Gifu prefectures were also needed to be updated due to accumulated crustal strain. Therefore, we additionally stopped provision of the Survey Results of triangulation stations in these four prefectures on May 31 when the new Survey Results of GEONET stations were released. The number of representative control points, including ones with the suspended Survey Results after the Tohoku Earthquake, is listed in Table 1.

Table 1 List of the number of control points across Japan and the number of control points in 20 prefectures withheld from publication of survey results

Type		No. of points	No. of withheld points
GEONET station		1,240	438
Triangulation station	First-order triangulation station	975	353
	Second-order triangulation station	5,060	2,140
	Third-order triangulation station	32,326	15,170
	Fourth-order triangulation station	70,713	26,194
Bench mark	First-order bench mark	14,768	991
	Second-order bench mark	3,471	388
Total		128,553	45,674

2. Required Accuracy and Revision Date for the Survey Results of GEONET Stations

In accordance with the tolerances indicated in the General Standard of Operation Specifications for Public Surveys, the accuracy required for calculating Survey Results of GEONET stations should be to a point-to-point relative accuracy of 2ppm.

Since positional data were necessary for restoration/reconstruction of the disaster-stricken area, and would also be utilized in resurvey of triangulation stations and public control points, urgent revision of Survey Results of GEONET stations was required. Meanwhile, to decrease the effect of postseismic deformation, future deformation was estimated based on the observation data of GEONET stations using the approximation formula with a logarithm function by Marone et al. [1991] as follows:

$$y(t) = c + a \ln \left(1 + \frac{t}{\tau_{\log}} \right),$$

where c and a are the constants, τ_{\log} is the time constant and t is the time elapsed from the earthquake.

The appropriate time of re-publication of revised Survey Results was then discussed based on the predicted deformation (Fig. 4). As a result, we decided that new Survey Results of GEONET stations should be published by the end of May.

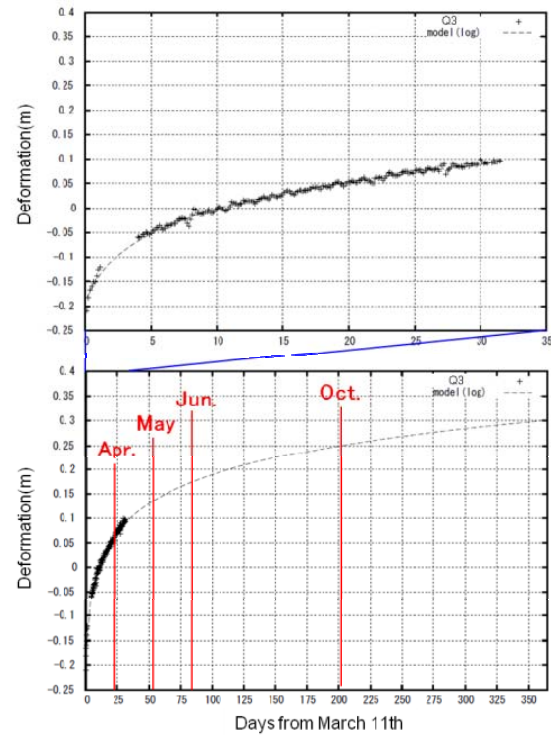


Fig. 4 (Top diagram) Progression of postseismic deformation observed at the GEONET station (950167) and (Bottom diagram) predicted deformation

3. Calculation of Survey Results of GEONET Stations

Conventionally, new Survey Results were calculated based on existing results. However, since crustal deformation occurred across a large area due to the Tohoku Earthquake, coordinates that correspond to International Terrestrial Reference Frame 2008 (ITRF2008) were calculated based on observation results at the VLBI (Very Long Baseline Interferometry) station (TSUKUB32) located in GSI, Tsukuba, and GEONET. These calculated coordinates were then adopted as new Survey Results for the area where update of Survey Result was required. Existing Survey Results had remained in western Japan and Hokkaido, where there was less crustal movement due to the earthquake. We recognized inconsistency at the

boundaries between the existing and updated Survey Results and corrected them with the model described in 3.1.3 to ensure the required accuracy for surveys.

3.1 Calculation of Survey Results Based on VLBI and GEONET

3.1.1 Coordinates of TSUKUB32

The coordinate of TSUKUB32 on ITRF2008 was estimated on the analysis of VLBI observation data of international VLBI session "IVS-R1482", which was conducted on May 10, to adopt the latest coordinates for the revision of the Survey Results. Table 2 shows the detail of the observation data. The session result of IVS-R1482 was acquired from the IVS data center and then analyzed using VLBI Analysis Software "Calc/Solve" (Table 3). We constrained the ITRF 2008 coordinates of five overseas stations, which were not affected by the earthquake, and the coordinates of TSUKUB32 were calculated.

3.1.2 Survey Results Calculation Method

The calculation method for Survey Results with observation results of the VLBI and GEONET is as follows (Fig. 5).

①First, the postseismic deformation was calculated from the difference in averages of R3 solutions at the GEONET Station 92110 (located in GSI, Tsukuba) between May 8-12 and May 22-26. Next, we calculated the coordinate of TSUKUB32 at 12:00 UTC, May 24 by adding the postseismic deformation to the coordinate calculated from VLBI observation at 5:00 UTC, May 10.

Table 2 International VLBI observation data (IVS-R1482)

Session name	IVS-R1482
Observation time	2:00 a.m., May 10, 2011 to 2:00 a.m., May 11, 2011 (Japan time)
Participating station	TSUKUB32 (Tsukuba, Japan) HOBART26 (Australia) KOKEE (U.S.) MATERA (Italy) NYALES20 (Norway) WETTZELL (Germany)

②The coordinates (ITRF2005) at 12:00 UTC, May 24 were calculated by averaging the R3 solution data in May 23-25. Then, we transformed the reference frame from ITRF2005 to ITRF2008.

Table 3 VLBI observation data analysis conditions

Analysis software	CALC/SOLVE release of 2010.05.21
Estimated parameter	
Station coordinates (ITRF2008)	X,Y,Z
Radio source (Partial)	RA, declination
Earth orientation parameter	Polar motion (X,Y,Xdot,Ydot) Earth rotation speed (dUT1,dUT1dot) Nutation offset (dPsi,deps)
Zenith wet delay	Estimated every 20 minutes
Relative time-scale change	Estimated every 60 minutes
Atmospheric gradient	Estimated every 8 hours
A priori	
Station coordinates, speed	ITRF2008 (Altamimi et al., 2011)
Radio source	ICRF2 (Fey et al., 2009)
Earth orientation parameter	USNO Finals from NASA/GSFC on 2011.05.25 (Godard Geodetic VLBI Group's web pages)
Ocean-tide loading model	Ocean loading model "2007b_oclo.hps" from NASA/GSFC (Petrov et al., 2003)
Mapping function	NMF dry mapping Function (Niell et al., 1996)

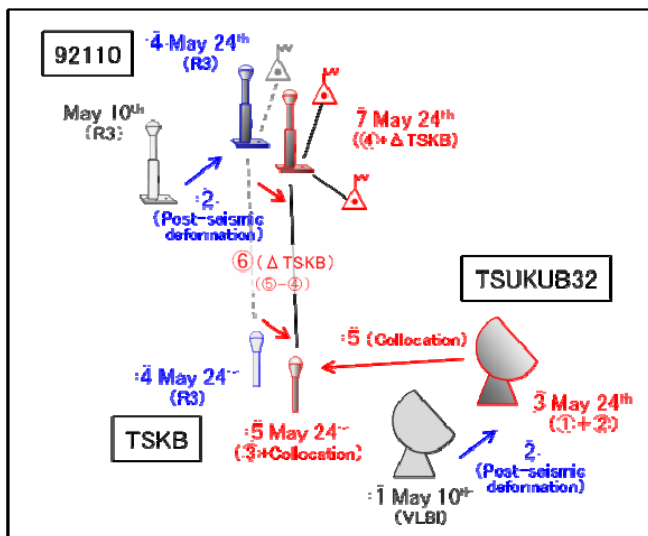


Fig. 5 Calculation of Survey Results with VLBI and GEONET

③Lastly, we combined ① and ② with the collocation result in 2007 (Miura et al. [2009]) and shifted the R3 solutions so that they were consistent with the coordinate of TSKB based on VLBI. The shifted R3 solutions (R3' solutions) were used as new Survey Results of GEONET stations that are located in the area for which publication of Survey Results had been stopped. To obtain the elevations of them, Japanese Geoid Model 2000 (Nakagawa et al. [2002]) was subtracted from ellipsoidal heights of each GEONET station.

3.1.3 Adjustment Calculations on Boundary Area

Discrepancies across the boundaries of areas with updated Survey Results and those with no updates had been caused by accumulated crustal strain since January 1, 1997 when Geodetic Coordinates 2000 was published. Thus, we calculated correction values for the revised Survey Results so that the amount of discrepancy across the boundaries became 2ppm or smaller. Since the strait lies between the main island of Japan and Hokkaido, corrections were applied to only western boundaries region (hereafter 'corrected area') (Fig. 2). The corrections were not applied for the elevations, because they were confirmed to satisfy the tolerances specified in General Standard of Operation Specifications for Public Surveys.

(1) Calculation of an approximate plane for latitude and longitude adjustments

First we assumed the discrepancies decrease linearly with the distance from the boundary and fitted them by planes by choosing fixed points outside the corrected area. The correction value planes are modeled as follows:

$$aBr_i + bLr_i = dB_i + \phi_i, \quad mBr_i + nLr_i = dL_i + \varphi_i,$$

where (dB_i, dL_i) are the differences in latitude and longitude respectively between in Geodetic coordinates 2000 and the R3' solutions at i -th fixed point, and (Br_i, Lr_i) are the latitude and longitude at i -th fixed point. Specifically, we assumed the differences at the fixed points are zero on the eastern side (the area targeted for revision) and are equal to the average of differences in Geodetic Coordinates 2000 and R3' solutions on the western side (the area not targeted for revision) which were calculated in 3.1.2. The least squares

method requires:

$$\frac{\partial}{\partial a} \left(\sum_i \phi_i^2 \right) = 0, \quad \frac{\partial}{\partial b} \left(\sum_i \phi_i^2 \right) = 0$$

Then we derived correction parameters a and b for the latitudes:

$$\begin{bmatrix} a \\ b \end{bmatrix} = A \begin{bmatrix} \sum_i Lr_i^2 & -\sum_i Br_i Lr_i \\ -\sum_i Br_i Lr_i & \sum_i Br_i^2 \end{bmatrix} \begin{bmatrix} \sum_i Br_i dB_i \\ \sum_i Lr_i dB_i \end{bmatrix}$$

$$A = \frac{1}{\sum_i Br_i^2 \sum_i Lr_i^2 - \left(\sum_i Br_i Lr_i \right)^2}$$

For the longitudes, the correction parameters m and n were calculated in the same way.

(2) Refinement through weighting with spherical distance

Next we refined the model using residuals from the approximate plane at each point in the corrected area. The model was refined through weighting by the reciprocal of the square of the spherical distance D_{ij} between each fixed point used in 3.1.3(1) and each point in the corrected area.

The direction cosine of fixed point at (Br_i, Lr_i) is:

$$(x_i, y_i, z_i) = (\cos Br_i \cos Lr_i, \cos Br_i \sin Lr_i, \sin Br_i)$$

The direction cosine of each point at (Br_j, Lr_j) in the corrected area is:

$$(x_j, y_j, z_j) = (\cos Br_j \cos Lr_j, \cos Br_j \sin Lr_j, \sin Br_j)$$

Then, the distance D_{ij} between them on the unit sphere is:

$$D_{ij} = \theta = \arccos(x_i x_j + y_i y_j + z_i z_j)$$

From these equations, the final correction values ($\Delta B_j, \Delta L_j$) at each GEONET station within the corrected area are:

$$\Delta B_j = \frac{\sum_i dB_i / D_{ij}^2}{\sum_i 1 / D_{ij}^2} + aBr_j + bLr_j + \overline{dB_i}$$

$$\Delta L_j = \frac{\sum_i dL_i / D_{ij}^2}{\sum_i 1 / D_{ij}^2} + mBr_j + nLr_j + \overline{dL_i}$$

The final new Survey Results were concluded by adding ($\Delta B_j, \Delta L_j$) to the R3' solutions in the corrected area.

The differences between the new Survey Results and previously established results at each GEONET station are shown in Fig. 6. It should be noted that the Survey Results mainly around the Tohoku district had differences as large as 5m whereas the amount of differences progressively decreased as getting closer to the western boundary. It was also confirmed that discrepancies within the corrected area were mostly smaller than 2ppm, which would not affect public surveys in that area.

3.2 Re-publication of Survey Results of GEONET Stations

On May 31, updated Survey Results of 438 GEONET stations were released and available for public surveys to be carried out using GEONET stations in the affected area and its vicinity. On the same day, publication of Survey Results of triangulation stations installed in Toyama, Ishikawa, Fukui and Gifu prefectures was stopped.

4. Amendment of Coordinate/Elevation of Origins of Japanese Horizontal/Vertical Control Network

In Article 11 of the Survey Act, it is stated that for basic surveys or public surveys, the standards for position are that it be represented by geographical latitude and longitude and height above the mean sea level. For this, a survey origin for the geographical latitude and longitude is *Nihon Keiido Genten* (Origin of the Japanese Horizontal Control Network) and an origin for the mean sea level is *Nihon Suijun Genten* (Origin of the Japanese Vertical Control Network). The position and coordinate/elevation of the origins are respectively prescribed in Article 2, Paragraphs 1 and 2 of the Order for Enforcement of the Survey Act.

Since the positions of the Origins of the Japanese Horizontal and Vertical Control Network had shifted, resulting in the prescribed coordinate and elevation being far off the current position after the earthquake, the coordinate and elevation of those origins were amended to ensure the accuracy of surveys.

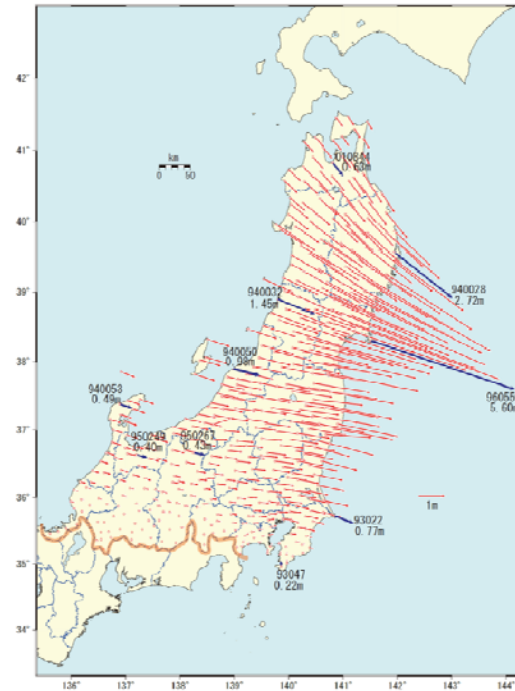


Fig. 6 Differences between before and after the revision of Survey Results of GEONET stations (Horizontal deformation)
The differences between before and after the revision of Survey Results contain not only coseismic/postseismic deformation caused by the Tohoku Earthquake but also any movements accumulated from January 1, 1997 (when previous Survey Results were calculated).

4.1 Amendment of Coordinate of the Origin of the Japanese Horizontal Control Network

To newly calculate coordinate of the Origin of the Japanese Horizontal Control Network, Global Navigation Satellite System (GNSS) observations were conducted between June 21 and 25 at the VLBI marker for TSUKUB32, which is installed on the GSI in Tsukuba, as well as at the Origin of the Japanese Horizontal Control Network (Sato et al. [2011]).

The coordinates of the Origin of the Japanese Horizontal Control Network newly calculated through these observations and the azimuth from the Origin of the Japanese Horizontal Control Network to the VLBI marker for TSUKUB32 are shown in Tables 4 and 5 respectively.

Table 4 Amended coordinates of the Origin of the Japanese Horizontal Control Network

Longitude Latitude	X (m)
	Y (m)
	Z (m)
139°44'28".8869	-3959340.203
35°39'29".1572	3352854.274
	3697471.413

Table 5 Azimuth from the Origin of the Japanese Horizontal Control Network to the VLBI marker at GSI, Tsukuba

Azimuth	32°20'46".209
---------	---------------

4.2 Amendment of Elevation of the Origin of the Japanese Vertical Control Network

Sea levels recorded at the Aburatsubo tide station before and after the Tohoku Earthquake showed that no significant tidal change associated with the earthquake was observed. Although GPS observations showed that P-Aburatsubo (GPS observation point located in the Aburatsubo tide station site) and the GEONET station "Miura 2" located nearby had sunk by several centimeters following the March 11 earthquake, the amount of sinkage tends to decrease with the progress of postseismic deformations. No significant change in ellipsoidal height was observed between pre-earthquake (January 2011) GPS observation results and post-earthquake (July 2011) results in terms of uncertainty of GPS observations.

Therefore, new elevation of the Origin of the Japanese Vertical Control Network was calculated through the following procedures ① and ② and then verified by the procedure③.

The leveling results used in this calculation were taken from the leveling route shown in Fig. 7.

**Fig. 7** Leveling route used in calculation of elevation of the Origin of the Japanese Vertical Control Network

①When the elevation of the Origin of the Japanese Vertical Control Network was fixed based on leveling results from the region between the Aburatsubo tide station and the Origin of the Japanese Vertical Control Network in January 2011 prior to the earthquake, the height of the reference point at the Aburatsubo tide station was determined to be 2.4173m.

②By fixing the elevation of the reference point at the Aburatsubo tide station obtained in ①, the new elevation of the Origin of the Japanese Vertical Control Network calculated based on leveling results of July 2011 was determined to be 24.3904m.

③For verification, the elevation of the Origin of the Japanese Vertical Control Network was calculated based on the results of leveling between the VLBI marker for TSKUB32 and the Origin of the Japanese Vertical Control Network with the result of 24.4007m (Fukuzaki, 2011).

With regard to standard deviation of the network adjustment of the leveling, since the estimated error of $\pm 0.0026\text{m}$ may be contained in the results shown in ① and ②, the newly amended elevation of the Origin of the Japanese Vertical Control Network should be 24.3900m after rounding off the ten-thousandth place.

4.3 Amendment of the Order for Enforcement of the Survey Act

Since the coordinate/elevation of the Origins of the Japanese Horizontal/Vertical Control Network were prescribed respectively in Article 2, Paragraphs 1 and 2 of the Order for Enforcement of the Survey Act, the order needed to be amended. Also, because Article 11 of the Survey Act requires Survey Results of control points to be expressed relative to these origins, the order for enforcement must first be amended before the Survey Results of control points can be revised. After being processed through required procedures, a cabinet decision on the amendment of the Order for Enforcement of the Survey Act was reached on October 18, 2011, followed by promulgation and implementation on October 21, 2011.

5. Revision of Survey Results of Triangulation Stations

To ensure accuracy of the revised Survey Results of triangulation stations, it is desired that surveys are

conducted on-site at triangulation stations. However, in terms of time and cost it is not always practical to conduct surveys at each and every triangulation station due to the fact that publication of Survey Results for more than 40,000 triangulation stations was stopped. Since the observed crustal deformation due to the Tohoku Earthquake was relatively similar in a wide area, precise geodetic surveys were to be conducted only at a selected number of triangulation stations - similar to practices followed after the Tokachi-oki Earthquake in 2003 (Doi et al. [2005]) - and triangulation stations not targeted for resurvey were to have their Survey Results recalculated using correction parameters. In addition, latitudes and longitudes of triangulation stations in the affected 20 prefectures (including Tokyo) for which publication of Survey Results was stopped were to be revised. Elevations of triangulation stations in six Tohoku prefectures and Ibaraki also needed to be revised since significant vertical movements (more than 10cm) immediately after the earthquake and certain vertical movements due to postseismic crustal activities were observed throughout the Pacific coast area covering the Tohoku district and Ibaraki. While conducting triangulation station resurveys and precise geodetic surveys after the March 12 earthquake which occurred near the boundary between Nagano and Niigata prefectures, elevations of that area were revised as well.

5.1 Triangulation Station Resurveys

Within the area for which publication of Survey Results was stopped, precise geodetic surveys were conducted at 595 points within 23 divisions as shown in Fig. 8. Also, within the Pacific coast area (close to the epicenter and tsunami devastated sites), the Nagano-Niigata boundary area and the Hamadori region of Fukushima where one of aftershocks occurred on April 11, resurvey of 1,272 triangulation stations within 47 divisions were conducted.

5.2 Recalculation of Survey Results of Triangulation Stations

Of the triangulation stations not slated for resurvey, 73 stations had their Survey Results recalculated based on data of previous observation. For remaining triangulation stations, a new set of correction parameters were developed



Fig. 8 Area map showing where triangulation stations for precise geodetic surveys and triangulation stations were resurveyed after the Tohoku Earthquake

and Survey Results of the triangulation stations were recalculated using PatchJGD, the software for correcting geodetic coordinates (Tobita, 2009). The number of the stations recalculated by the software was 41,392.

5.3 Correction Parameters

To recalculate the Survey Results of triangulation stations, correction parameters for coordinates (horizontal) and elevations were developed using both previous and revised Survey Results of GEONET stations and the triangulation stations for precise geodetic surveys. The correction parameters were constructed by estimating variations at the southwest corner of a third-order mesh code from displacements of GEONET stations and triangulation stations using the Kriging method and were extracted so as to cover the land area.

The constructed parameters were not only used for recalculation of triangulation stations but were also available to general users for use in corrections of public control points. For this reason, the coordinates calculated through

the correction parameters were verified (external evaluation) through comparison with coordinates obtained through actual surveys.

The verified results showed that deviations of more than 90% of triangulation stations were within 10cm of the correction parameters for coordinates and were within 20cm of the correction parameters for elevations. However, some triangulation stations had discrepancies of more than 50cm. Since such cases are extremely rare, it was highly likely that errors took place after obtaining previously established Survey Results. Figures 9 and 10 show the histograms showing results obtained through external evaluations of coordinate/elevation correction parameters. The area to which the developed correction parameters were to be applied was designated in accordance with the target area for resurvey of triangulation stations; that is, the correction parameters for coordinates were applied to the whole area for which publication of Survey Results was stopped while the correction parameters for elevations were only applied to six Tohoku prefectures and Ibaraki. It should be noted that exclusions due to it being impossible to check the accuracy of the correction parameters included the area within a 30km radius of the Fukushima No.1 nuclear power plant, the planned evacuation zone and regions where crustal deformation due to relatively large aftershocks following the Tohoku Earthquake occurred as observed through surveys from GEONET stations and Synthetic Aperture Radar (SAR) interferometry (Geospatial Information Authority of Japan, 2011) (Fig. 11 and Fig. 12). The revision of Survey Results for triangulation stations not slated for resurvey was carried out based on these correction parameters.

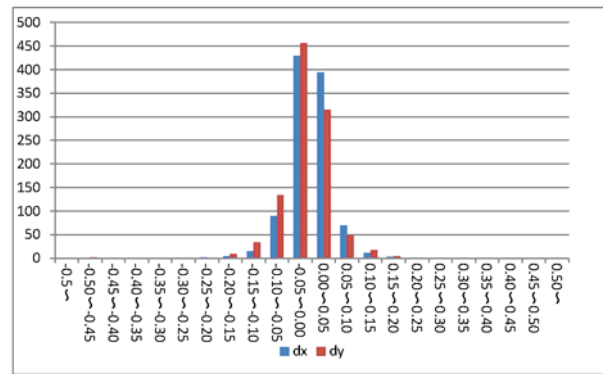


Fig. 9 Histogram showing results obtained through external evaluations of correction parameters for coordinates

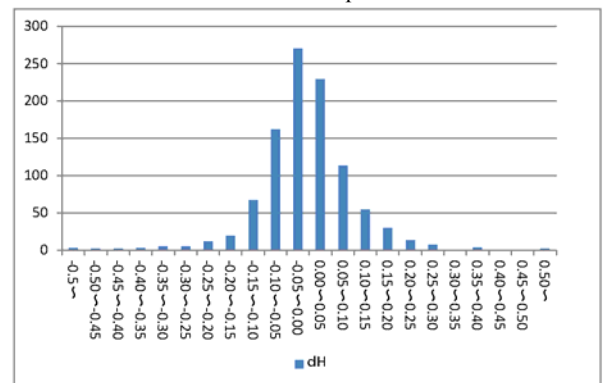


Fig. 10 Histogram showing results obtained through external evaluations of correction parameters for elevations

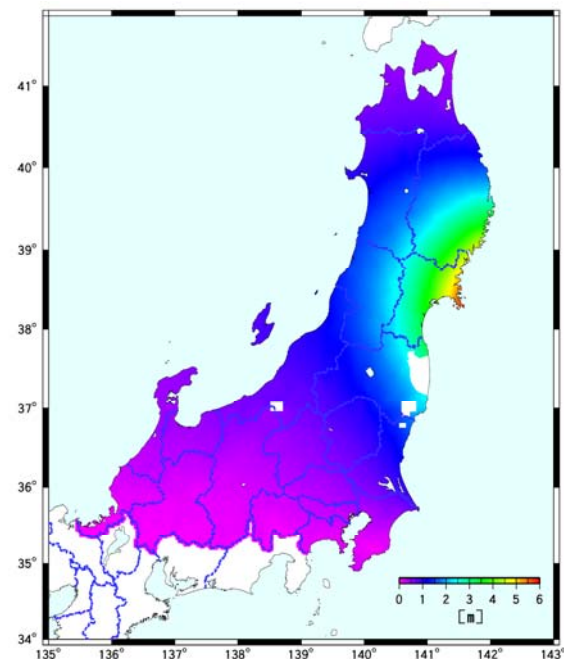


Fig. 11 Correction parameters developed for coordinates. Blank spots show the area to which the correction parameters were not applied: the area within a 30km radius from the Fukushima No.1 nuclear power plant; the planned evacuation zone; and regions affected by crustal deformation as a result of the March 12 earthquake near the Nagano-Niigata boundary, the March 19 earthquake in northern Ibaraki and the April 11 earthquake in the Hamadori region of Fukushima.

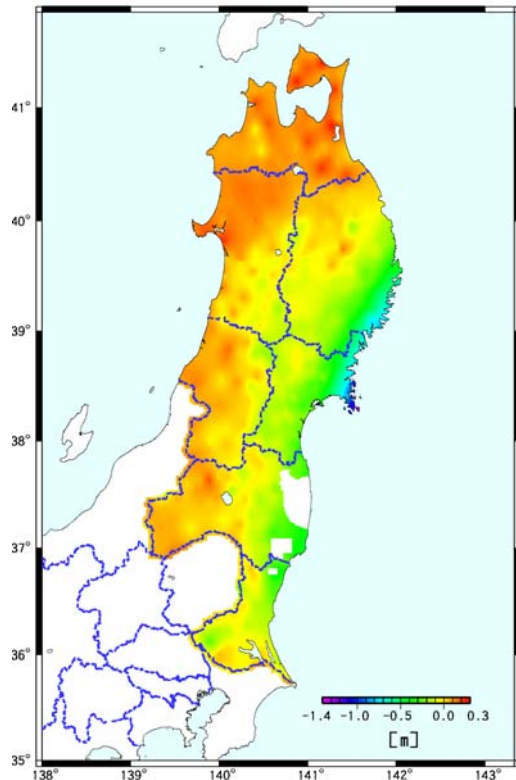


Fig. 12 Correction parameters developed for elevations
Blank spots show the area to which the correction parameters were not applied: the area within a 30km radius from the Fukushima No.1 nuclear power plant; the planned evacuation zone; and regions affected by crustal deformation as a result of the March 19 earthquake in northern Ibaraki and the April 11 earthquake in the Hamadori region of Fukushima.

6. Revision of Survey Results of Bench Marks

The target accuracy of the correction parameters for elevations used for the revision of Survey Results of triangulation stations was 10cm to 20cm and those parameters cannot be applied in the revision of Survey Results of bench marks that requires elevation accuracy of 0.1mm to 1mm. Therefore, revision of Survey Results of bench marks were, in essence, to be done through resurvey, and network adjustment with multiple reference points was calculated based on the updated elevation of the Origin of the Japanese Vertical Control Network and high-precision 3D surveys (leveling) conducted in the Tohoku and Kanto districts.

The regions where high-precision 3D surveys were conducted to update the elevation of the Origin of the Japanese Vertical Control Network as well as the Survey Results of bench marks are the 24 divisions (3,660km) as shown in Fig. 13.

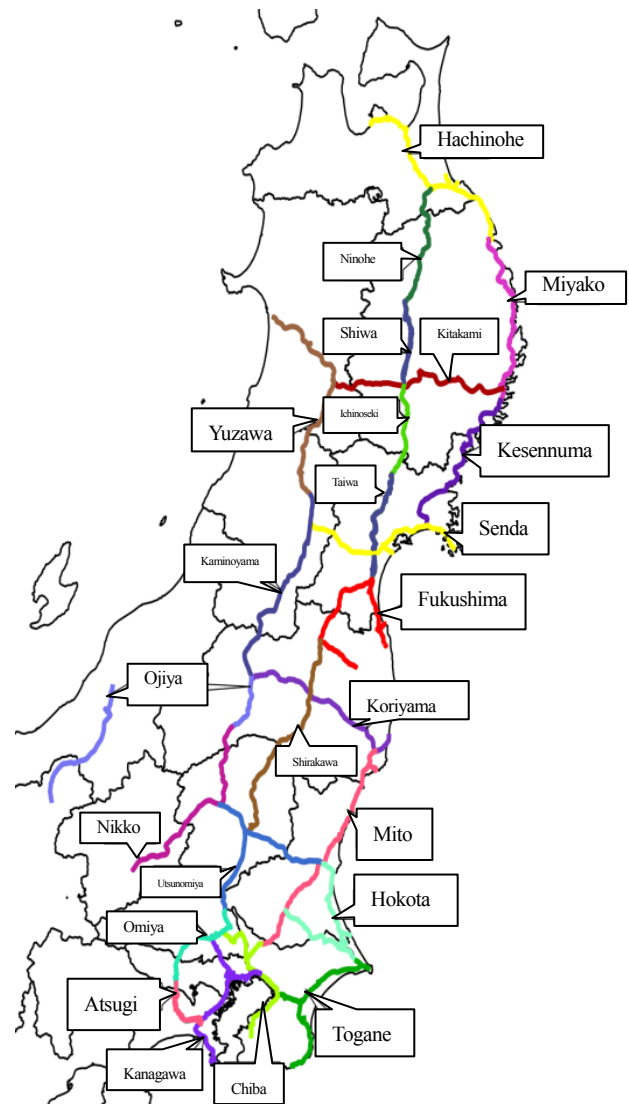


Fig. 13 Map of the 24 divisions where high-precision 3D surveys were conducted

When calculating network adjustment, it was essential to minimize the impact on areas that do not include resurvey-slanted leveling routes so as to ensure a certain degree of accuracy. To do so, network adjustment had to be calculated by designating multiple bench marks that were not affected by the earthquake as reference points.

The reference points were determined, after discussion, to be the first-order bench mark 5527-2 located in Ninohe of Iwate as well as the Origin of the Japanese Vertical Control Network.

Revised Survey Results of bench marks obtained by network adjustment calculations based on these two reference points were released on October 31. Fig. 14 shows the difference between the revised Survey Results and the Geodetic Coordinates 2000 (vertical).

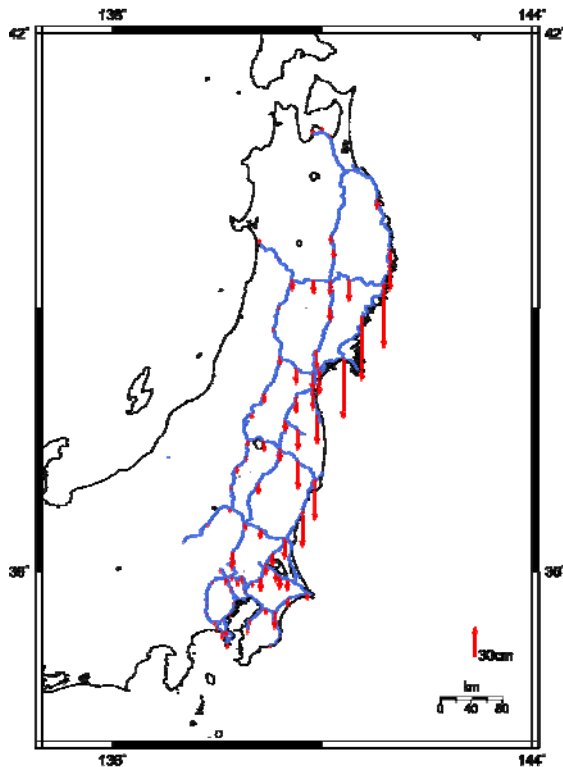


Fig. 14 Amount of displacement between revised Survey Results and the Geodetic Coordinates 2000 (vertical)

7. Conclusion

Following the earthquake off the Pacific coast of Tohoku, notable crustal deformation occurred over a wide area of eastern Japan, which led to the stop of publication of Survey Results of GEONET stations and triangulation stations in 16 prefectures and Survey Results of bench marks from the Tohoku and Kanto districts on March 14, 2011 (with addition of several areas on May 31).

In order to contribute to swift restoration/reconstruction of the disaster-stricken area, and to ensure stable provision of Survey Results for many years to come, the amount of future deformation was estimated by taking postseismic deformation monitored by GEONET stations into account and, after discussions with regard to an appropriate time for re-publication, revised Survey Results of GEONET stations were released on May 31.

Precise geodetic surveys were conducted at some of triangulation stations, and Survey Results for the remaining triangulation stations were revised through calculations based on the correction parameters.

The revision of the Survey Results of bench marks was, in essence, achieved through resurvey. High-precision

3D surveys were conducted in the Tohoku and Kanto districts and network adjustment was calculated based on the revised elevation for the Origin of the Japanese Vertical Control Network.

The revised Survey Results of triangulation stations and bench marks were released on October 31. Because the coordinate/elevation of the Origins of the Japanese Horizontal/Vertical Control Network were updated, and because Survey Results were revised across a wide area of eastern Japan, the revised Survey Results of GEONET stations, triangulation stations and bench marks across Japan were re-named with the following title to make users aware of the changes: "Geodetic Coordinates 2011."

References

- Altamimi, Z., X. Collilieux and L. Metivier (2011): ITRF 2008 an improved solution of the international terrestrial reference frame, *Journal of Geodesy*, 85, 457-473.
- Hiroyuki NAKAGAWA, Kojin WADA, Tadayuki KIKKAWA, Hisao SHIMO, Hisashi ANDOU, Yuki KUROISHI, Yuki HATANAKA, Hiromi SHIGEMATSU, Kazuyuki TANAKA, Yoichi FUKUDA(2003): Development of a New Japanese Geoid Model, "GSIGEO2000", *Bulletin of the Geospatial Information Authority of Japan*, 49, 1-10.
- Hiromitsu DOI, Toshihiro YAHAGI, Yasutomo SHIRAI, Mitsuo OHTAKI, Tadashi SAITO, Toshihiro MINATO, Hiromi CHIBA, Takehisa INOUE, Katsuki SUMIYA, Jun SUGAWARA, Yoshiyuki TANAKA, Hiroaki SAITA, Hideki KOJIMA, Toru YUTSUDO, Tomomi AMAGAI, and Masao IWATA (2005): The Revision of Geodetic Coordinates of Control Points Associated with the Tokachi-oki Earthquake in 2003, *Journal of the Geospatial Information Authority of Japan*, 108, 1-10. (Japanese)
- Fey, A., D. Gordon and C.S. Jacobs (2009): The Second Realization of the International Celestial Reference Frame by Very Long Baseline Interferometry, *IERS Technical Note No.35*, http://www.iers.org/IERS/EN/Publications/TechnicalNotes/t_n35.html (accessed 14 Sep 2010).
- Yoshihiro FUKUZAKI (2011): VLBI sanshouten (AZEL kouten) no daentaikou no heniryuu wo mochiita heisei 23

- nen (2011 nen) touhokuchihou taiheiyouoki jisin go no suijungentensuuchi no suitei, kokudochiriin sokuchibu heisei 23 nendo gijutsuhoukokusho. (Estimation of the numeric values of the vertical datum after the 2011 off the Pacific coast of Tohoku Earthquake based on the change in ellipsoidal height at the VLBI reference point (AZEL intersecting point), 2011 Technical Report by Geodetic Department, Geospatial Information Authority of Japan.) (Japanese)
- Godard Geodetic VLBI Group's Gemini auxiliary web pages, http://gemini.gsfc.nasa.gov/solve_save/usno_final_s.erp (accessed 27 Feb, 2009).
- Hisashi SUIITO, Takuya NISHIMURA, Shinzaburo OZAWA, Tomokazu KOBAYASHI, Mikio TOBITA, Tetsuro IMAKIIRE, Shinichiro HARA, Hiroshi YARAI, Toshihiro YAHAGI, Hisao KIMURA and Satoshi KAWAMOTO (2011a): Coseismic Deformation and Fault Model of the 2011 off the Pacific coast of Tohoku Earthquake, Based on GEONET, Journal of the Geospatial Information Authority of Japan, 122, 29-37. (Japanese)
- Hisashi SUIITO, Takuya NISHIMURA, Shinzaburo OZAWA, Mikio TOBITA, Shinichiro HARA, Hiroshi YARAI, Toshihiro YAHAGI, Hisao KIMURA and Satoshi KAWAMOTO (2011b): Postseismic Deformation and Postseismic Slip Model Following the 2011 off the Pacific coast of Tohoku Earthquake, Based on GEONET, Journal of the Geospatial Information Authority of Japan, 122, 39-46. (Japanese)
- Toshio KAWAHARA (2011): Touhokuchihou taiheiyouoki jisin ni tomonau chikakuhendouchiiki no jioido heno eikyokeisan ni tuite, kokudochiriin sokuchibu heisei 23 nendo gijutsuhoukokusho. (Effect calculation for the geoid in the area of crustal deformation due to the 2011 off the Pacific coast of Tohoku Earthquake, 2011 Technical Report by Geodetic Department, Geospatial Information Authority of Japan.) (Japanese)
- Geospatial Information Authority of Japan (2011): Touhokuchihou taiheiyouoki jisin ni tomonau chikakuhendou wo mentekini haaku - saishuuban wo sakusei (Understanding crustal deformation caused by the 2011 off the Pacific coast of Tohoku Earthquake through monitoring of the earth's surface - Final Report), <http://www.gsi.go.jp/uchusokuchi/uchusokuchi40010.html> (accessed 30 Nov. 2011). (Japanese)
- Marone, C. J., C. H. Scholtz and R. Bilham (1991): On the Mechanics of Earthquake Afterslip, Journal of Geophysical Research, 96, B5, 8441-8452.
- Yuji MIURA, Kenji YOSHIDA, Kyoko KOTANI, Shinobu KURIHARA and Satoshi KAWAMOTO (2009): VLBI-GPS Co-location Survey, Journal of the Geospatial Information Authority of Japan, 119, 71-85. (Japanese)
- Niell, A.E (1996): Global mapping functions for the atmosphere delay at radio wavelengths, Journal of Geophysical Research, 101, B2, 3227-3246.
- Petrov, L., C. Ma (2003): Study of harmonic site positions determined by very long baseline interferometry, Journal of Geophysical Research, 108, B4, 2190, doi:10.1029/2002JB001801.
- Yudai SATO, Toshiyuki SASAKI and Satoshi UENO (2011): Heisei 23 nen (2011 nen) Touhokuchihou taiheiyouoki jisin ni tomonau nihonkeiidogenten no atarashii gentensuuchi no sanshutsu, kokudochiriin sokuchibu heisei 23 nendo gijutsuhoukokusho. (Calculations of the revised numeric values of the horizontal datum and vertical datum of Japan after the 2011 off the Pacific coast of Tohoku Earthquake, 2011 Technical Report by Geodetic Department, Geospatial Information Authority of Japan.) (Japanese)
- Mikio TOBITA (2009): PatchJGD, Software for Correcting Geodetic Coordinates for Coseismic Displacements, Journal of the Geodetic Society of Japan, 55, 355-367. (Japanese)