

1 : 50,000

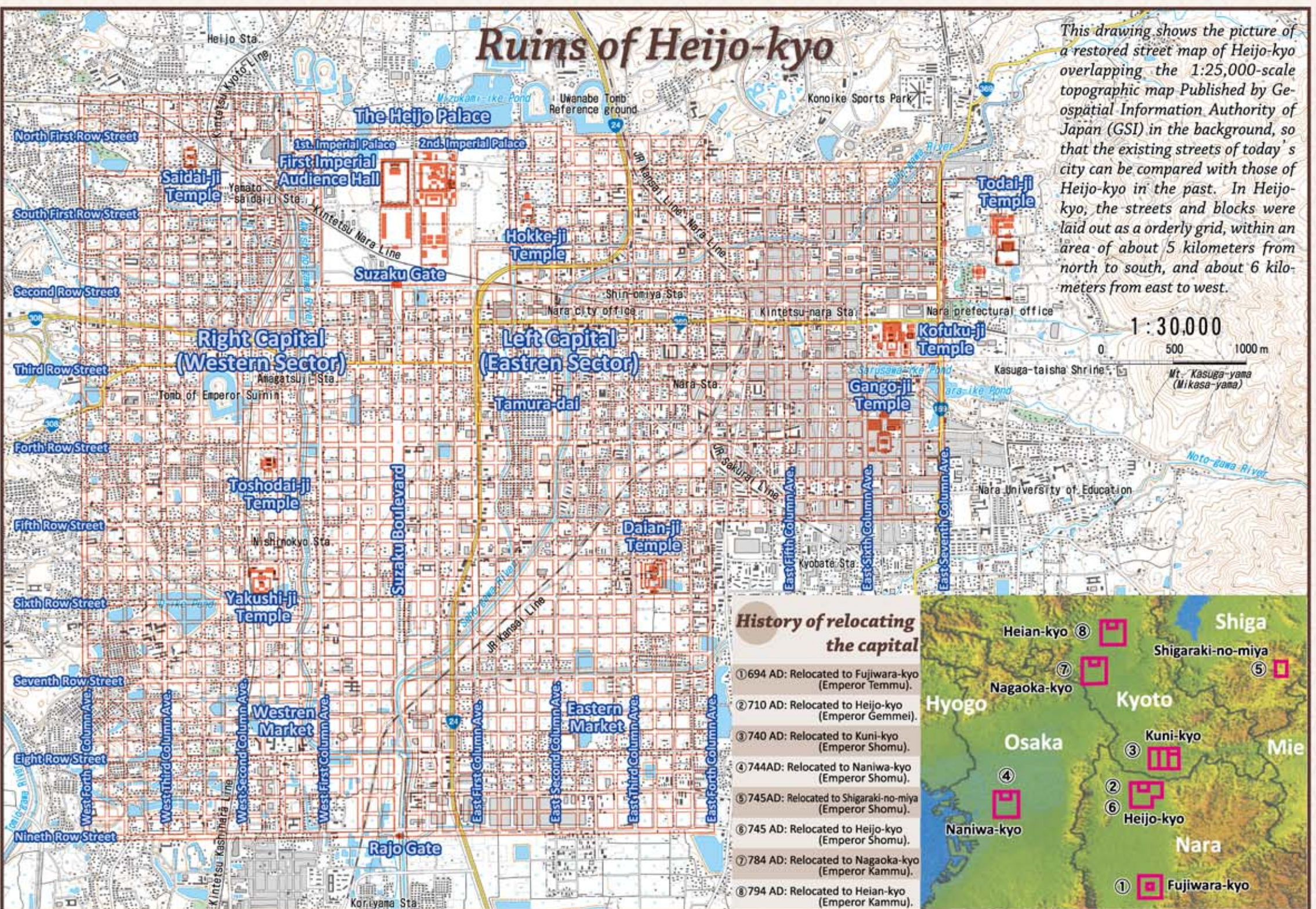
NARA

A city for tracing the history of Japan

Commemorating the 1,300th anniversary of relocating the capital to Heijo-kyo



Geospatial Information Authority of Japan



Note for Users of 1:50,000 NARA

This map covers Nara, Japan's representative city for history, culture and tourism, and its surroundings. The map on the front side is prepared using 1:50,000-scale topographic maps of Nara, northeastern Osaka, Sakurai, Yoshino-yama, southeastern Osaka and Gojo. And the map on the back side shows changes of the landform around Nara Basin and the ancient roads and highways within Nara Prefecture. This map is designed to be widely used in the fields of culture, education, and tourism.

The map on the front side Features:

- Hill shades in mountainous areas to show the relief of the landform.
- The locations of structures designated cultural properties or otherwise important sites are clearly indicated with symbols, along with annotations.
- Ancient roads and highways, parks and green spaces.
- Orthogonal grid lines per 2,000 meters.

The map on the back side Features:

- Cover:** Drawing of the First Imperial Audience Hall restored by the Agency for Cultural Affairs.
- Route of Heijo-kyo:** In order to compare the layout of streets, a restored street map of Heijo-kyo (provided by Nara Prefecture's board of education) is overlapped with a 1:25,000-scale topographic map. The history of relocating the capital is also indicated in a hysteronomic tint map (with shading) of the area around the Nara Basin.
- Changes in the landform around the Nara Basin:** Based on Technical Report of the GSI D-1-140-430 entitled "In search of the ancient geography of the Kinki region" (a survey report on the ancient geography of the Kinki region, as jointly prepared by the Kinki Regional Development Bureau, MLIT and GSI), the changes in the landform of the area around the Nara Basin from the Jomon era to the present day are reproduced and explained.
- Appearance of the Nara Basin in the Nara period:** Based on Technical Report of the GSI D-1-140-430 entitled "In search of the ancient geography of the Kinki region" (a survey report on the ancient geography of the Kinki region, as jointly prepared by the Kinki Regional Development Bureau, MLIT and GSI), the appearance of the Kinki region when the capital was relocated to Heijo-kyo is reproduced and explained.
- Ancient roads and highways in Nara Prefecture:** An outline of the routes of ancient roads and highways along the major historically valuable ancient roads and highways is introduced here. The routes are indicated based on reference materials regarding Nara Prefecture and 1:50,000-scale topographic maps, and its former edition issued by GSI and others. Other possible routes are shown for sections that are difficult to pass, and any natural route developed as a footpath or trail is also adopted. The generally used names are indicated here.
- Nara Prefecture and its surroundings:** The geographical proximity between Nara Prefecture and other nearby prefectures and major cities is indicated along with the range of drawings, national parks, quasi-national parks, and others.
- Guide to points of interest:** The locations of major Buddhist temples, Shinto shrines and Historic spot sites (shown in the front map) designated a national treasure, important cultural property, and/or a World Heritage site, and those designated as government-designated dig sites, scenic beauty spots or natural monuments are marked with squares.

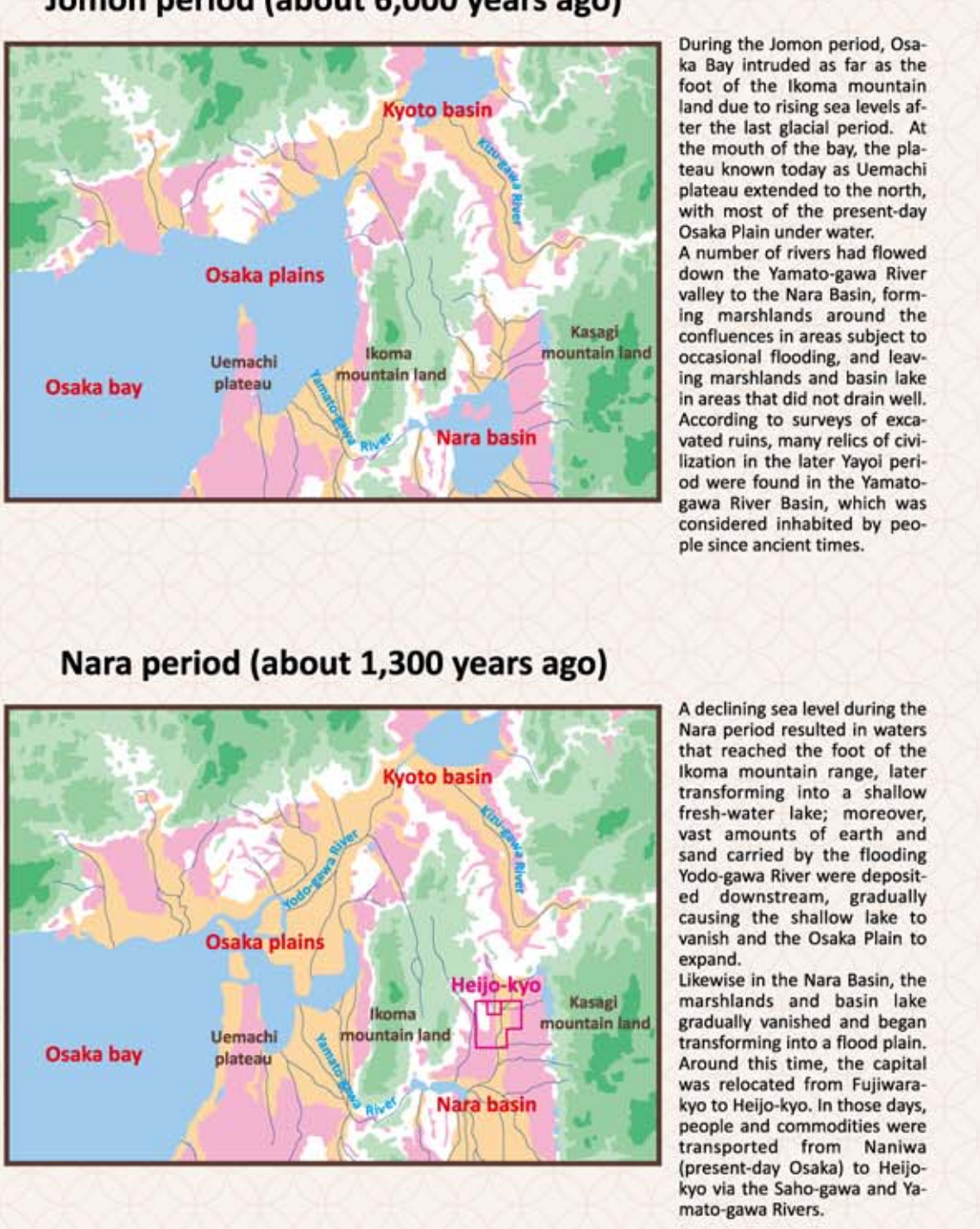
Nara is a city with highly valuable cultural assets to be globally treasured. You are kindly requested to observe the rules and manners for their protection and preservation.

Compiled in 2010
© Geospatial Information Authority of Japan (GSI). ALL RIGHTS RESERVED.

Kisato-1, Tsukuba, Ibaraki
305-0811 Japan
TEL +81-29-864-1111
URL <http://www.gsi.go.jp/ENGLISH/>

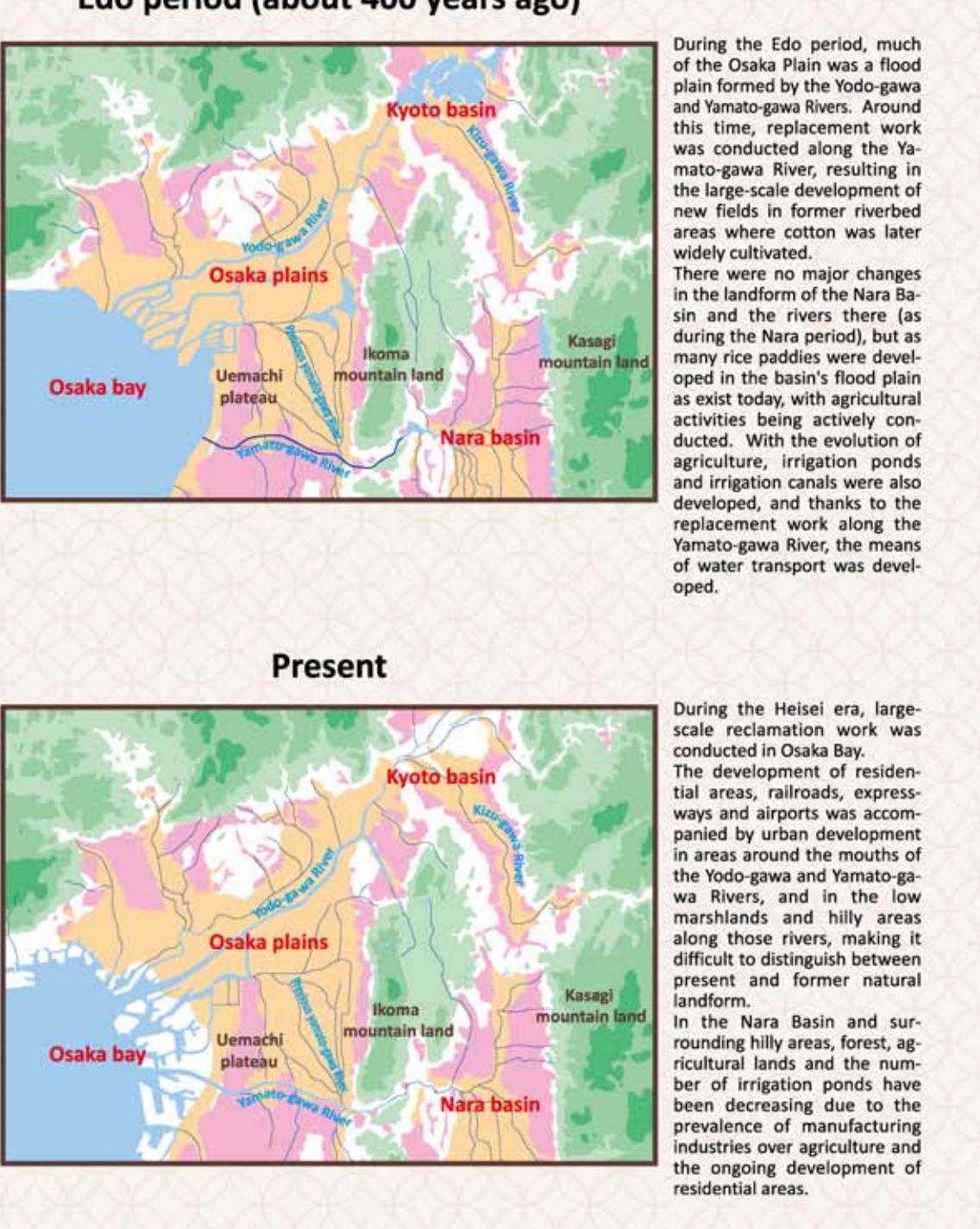
Changes in the landform of the area around the Nara Basin

1 : 650,000



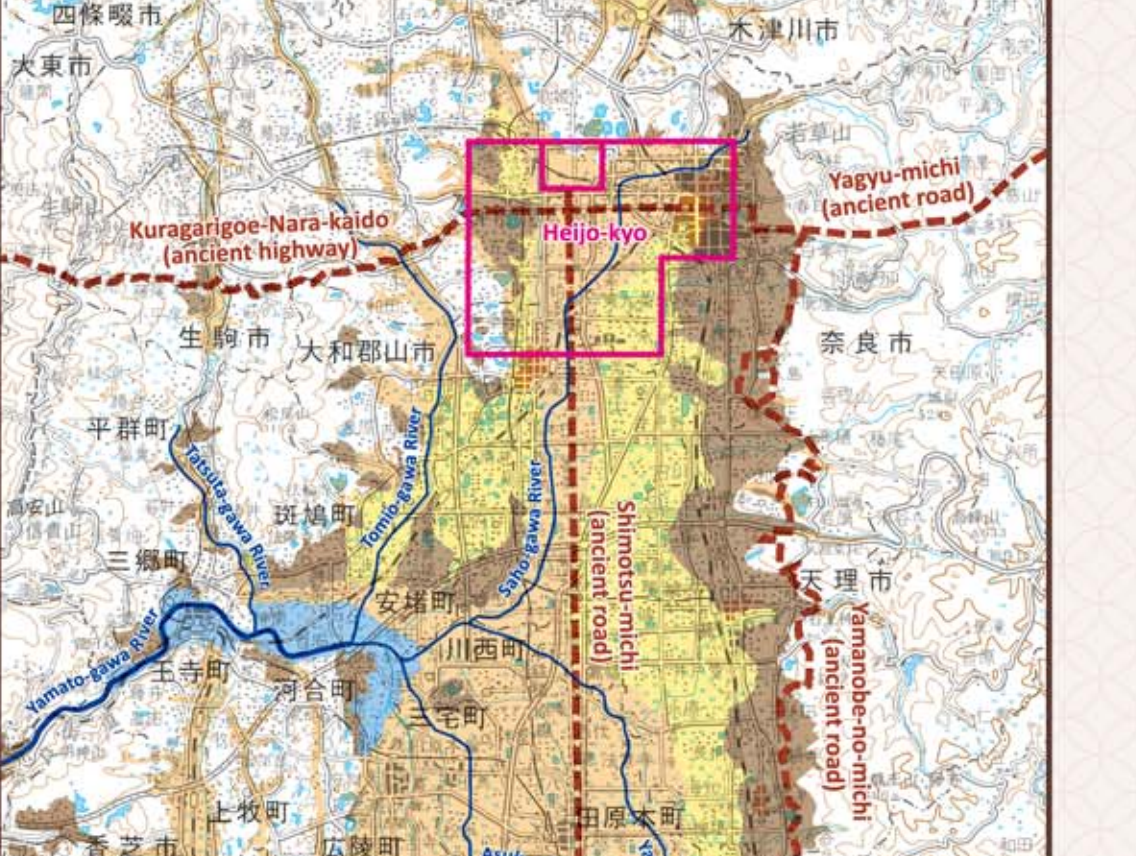
Appearance of the Nara Basin in the Nara period

1 : 170,000



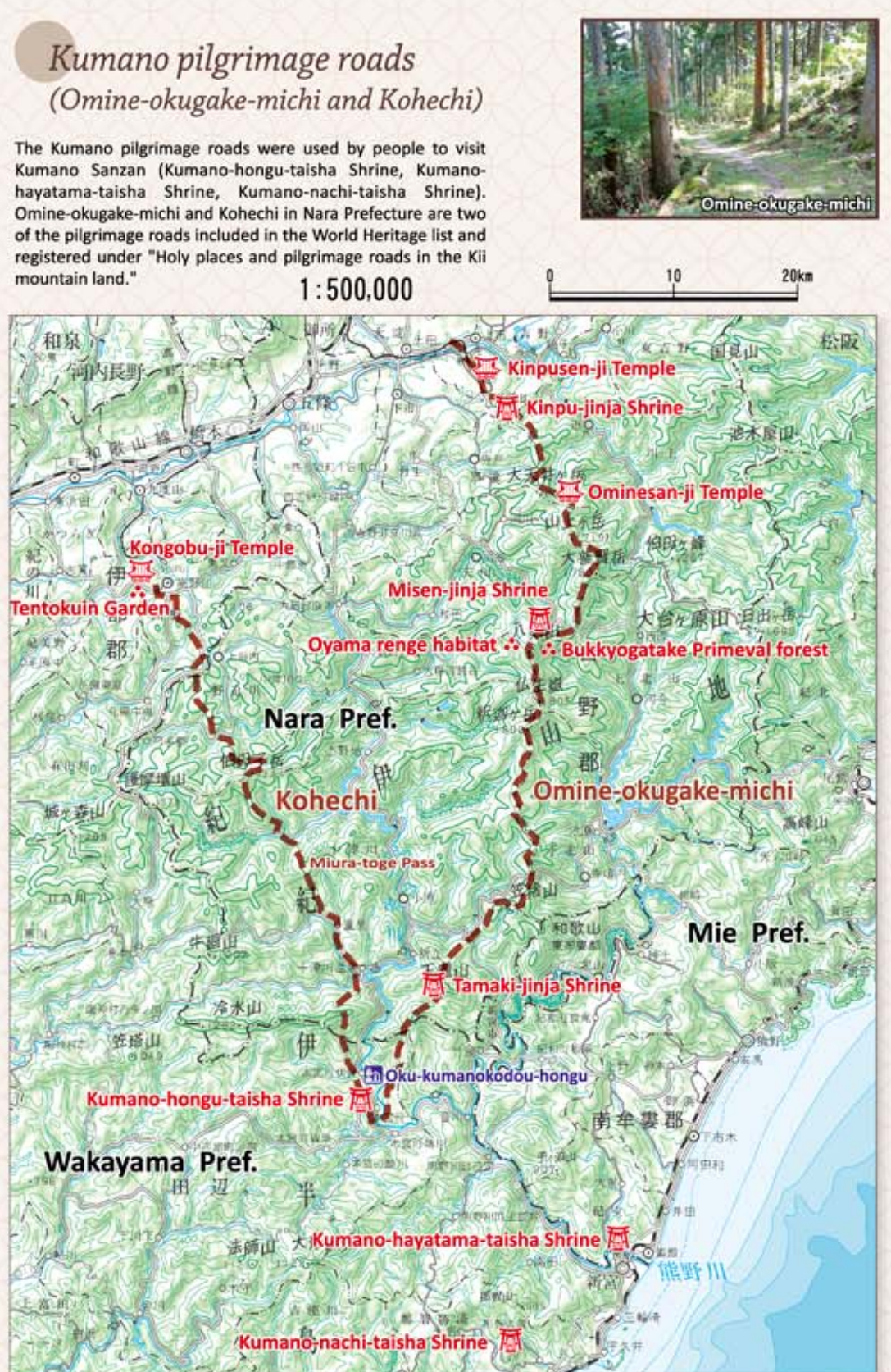
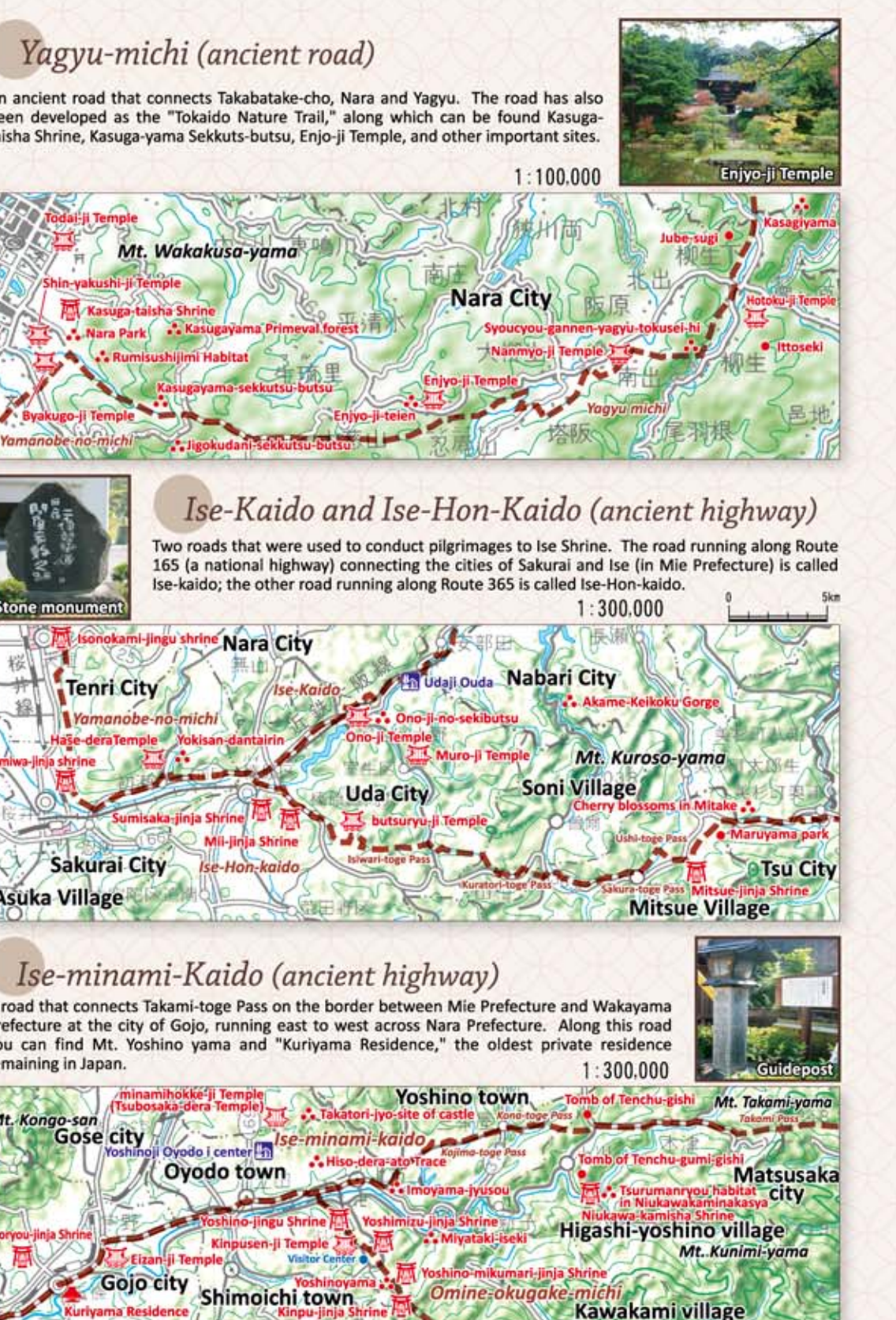
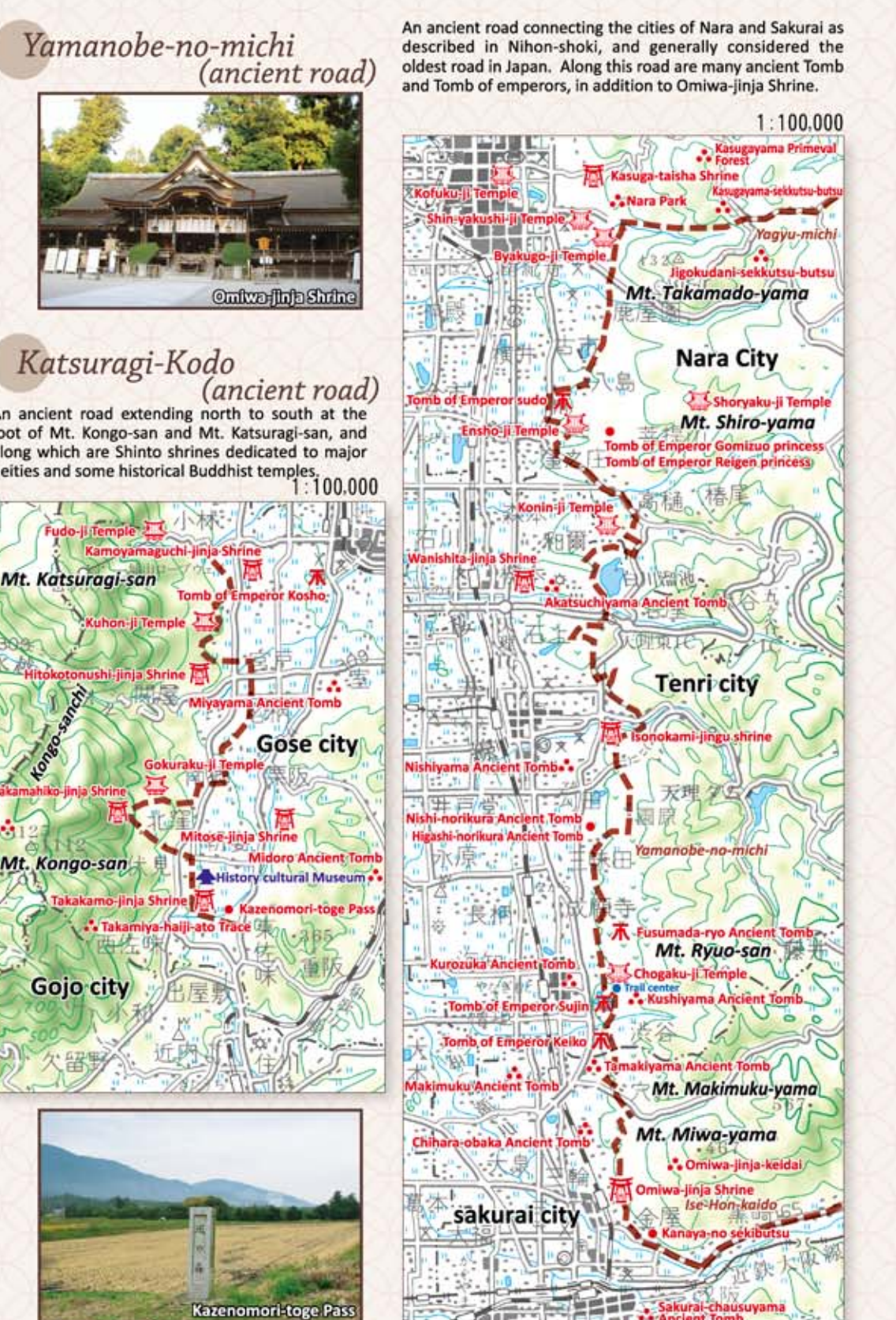
Explanation of "Appearance of the Nara Basin in the Nara period"

A restored image of the landform in the Nara period based on documents and data overlapped on the present day 1:200,000-scale regional map.

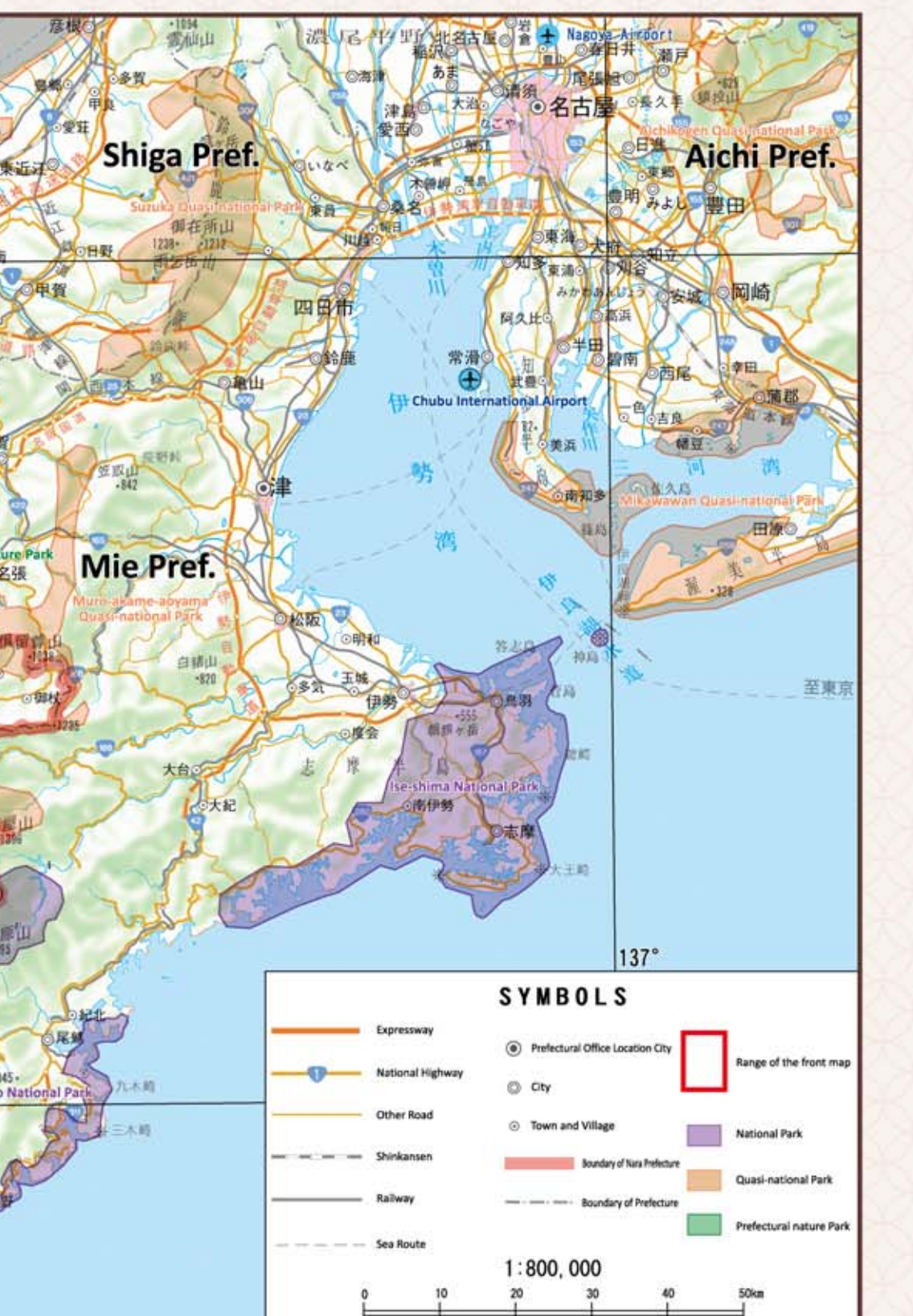
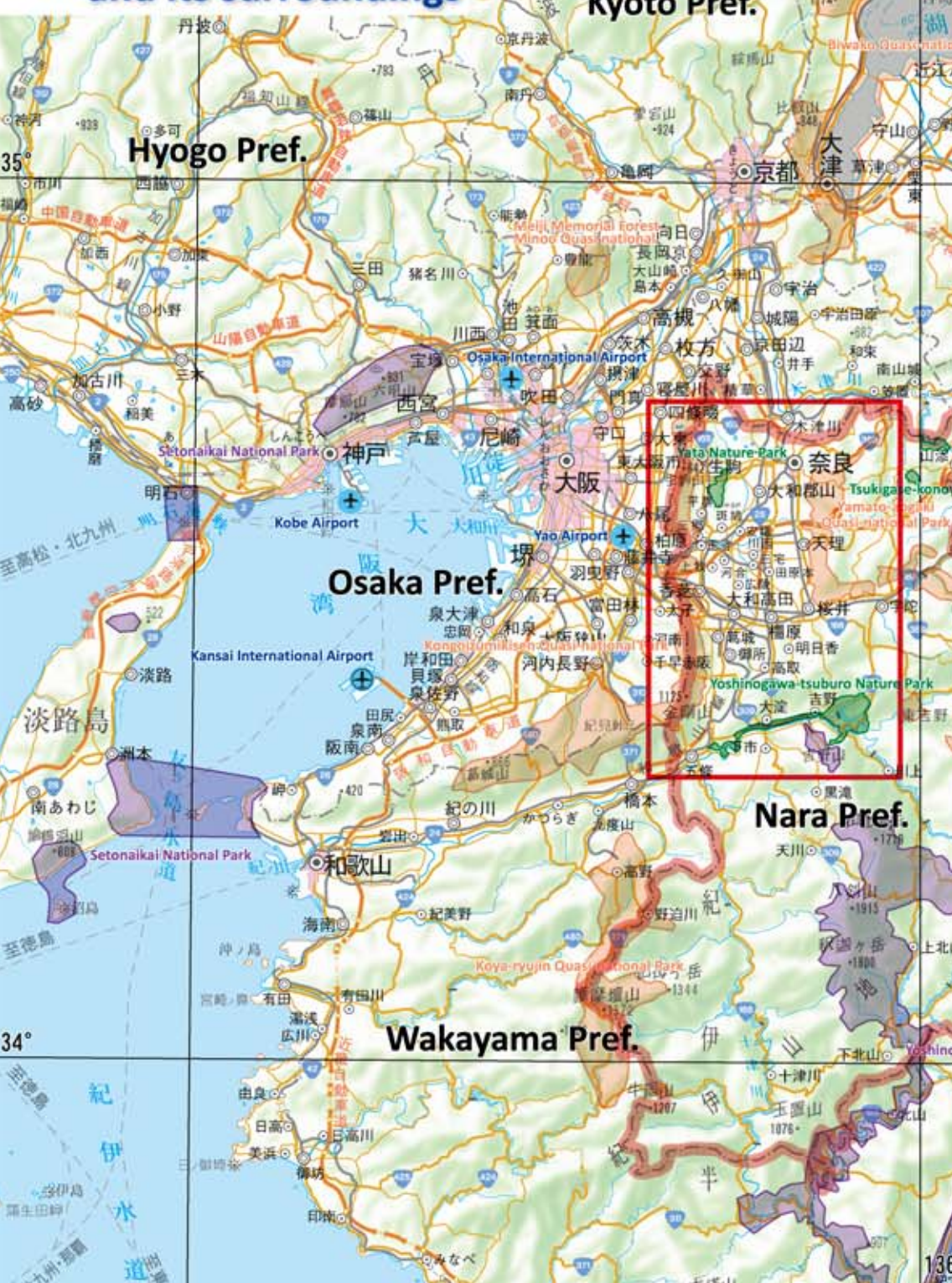


Ancient roads and highways in Nara Prefecture

In Nara Prefecture, the roads that were developed to link the capital with local districts (roads for transporting people, culture and commodities) are preserved as "ancient roads" and "ancient highways", along which we can encounter many elements of precious historical heritage.



Nara Prefecture and its surroundings



Nara Public Offices		Osaka Public Offices	
Nara Prefectural Office	D-10	Taishi Town Office	M-1
Gojo City Office	V-3	Kyoto Public Offices	
Gose City Office	P-5	Kizugawa City Office	A-9
Ikoma City Office	D-3	Universities	
Kashihara City Office	N-8	Kinki University	E-5
Kashiba City Office	L-3	Nara Institute of Science and Technology University	A-5
Katsuragi City Office	O-5	Nara Medical University	N-8
Nara City Office	D-8	Nara Prefectural University	D-9
Sakurai City Office	M-10	Nara Sangyo University	I-3
Tenri City Office	T-10	Nara University	B-7
Uda City Office	M-15	Nara University of Education	E-10
Yamatokoriyama City Office	F-7	Nara Women's University	D-9
Yamatotakada City Office	M-5	Osaka Kyoiku University	K-1
Ando Town Office	H-6	Osaka Shoin Women's University	K-2
Heguri Town Office	G-4	Osaka University of Economics and Law	F-1
Ikaruga Town Office	H-5	Tenri University	I-10
Kanmaki Town Office	K-4	Tezukayama University	O-10
Kawai Town Office	J-5	Museums	
Koryo Town Office	L-6	Asuka Historical Museum	O-9
Kawanishi Town Office	J-7	Heijo Palace Site Museum	D-8
Miyake Town Office	J-4	Heijo-kyo Historical Museum	D-8
Oji Town Office	I-4	Karako-Kagi Archaeological Museum	K-8
Oyodo Town Office	T-8	Nara National Museum	D-10
Sango Town Office	I-3	Nara Prefectural Folk Museum	F-6
Shimoichi Town Office	V-8	Nara Prefectural Museum	O-8
Takatori Town Office	Q-8	Nara Prefectural Museum of Art	D-10
Tawaramoto Town Office	K-8	Nara Prefectural Man-yo Museum	O-9
Yoshino Town Office	T-11	Takamatsuzuka Mural Museum	P-8
Asuka Village Office	P-9		
Kawakami Village Office	W-15		